

EXODUS T-2800

Large-Scale GMP Manufacturing

- EXODUS T-2800 can efficiently isolate high-purity, high-yield, and highly active exosomes from large volume cell culture media;
- Stem cell-derived exosomes isolated by EXODUS T-2800 can be used for the treatment of eye diseases, respiratory disorders, trauma, and so on.

EXODUS T-2800 enabling seamless transitions from laboratory R&D to large-scale GMP manufacturing



EXODUS H-600

Processing volume
10 μ L-250 mL

Maximum processing speed
200 mL/h

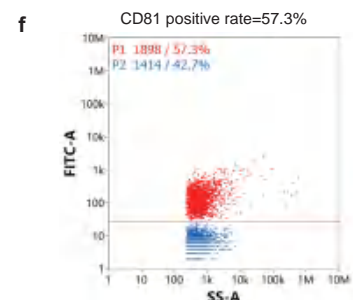
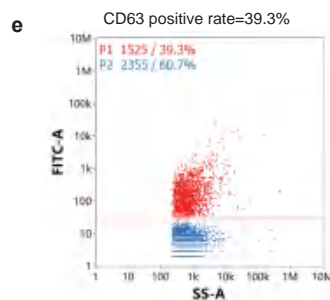
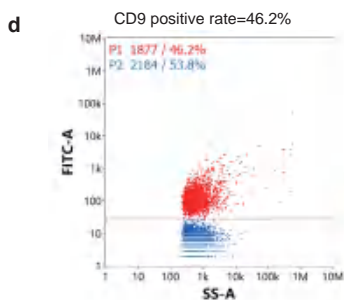
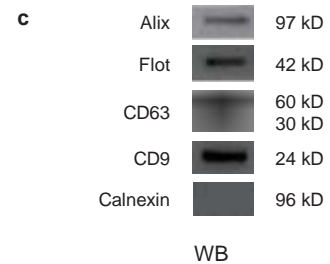
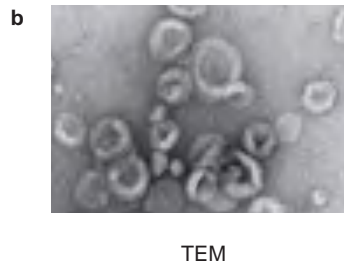
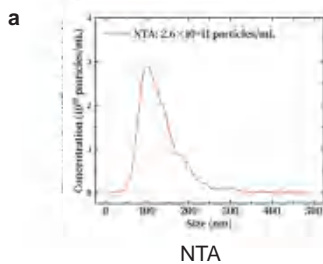


EXODUS T-2800

Processing volume
1-10 L

Maximum processing speed
2 L/h

Characterization results of isolated MSC-EVs



Nano flow cytometry